

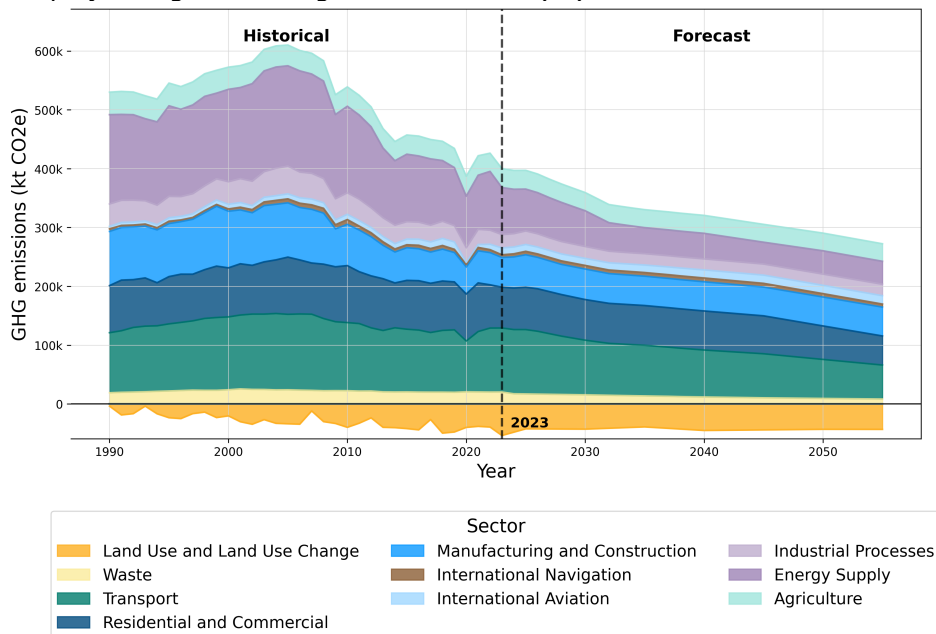


# National system for policies and measures and greenhouse gas projections of Italy

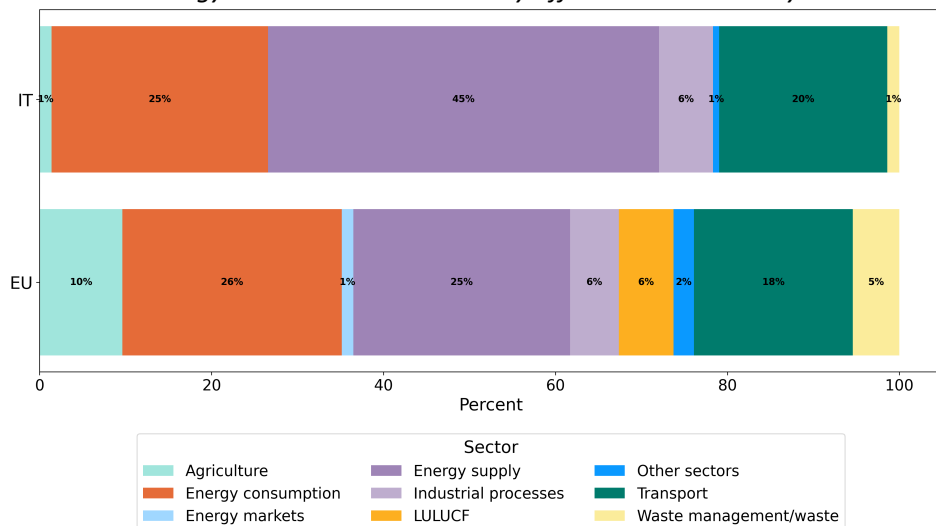
## Information reported in 2025

A robust and complete national system ensures the delivery of good-quality information on the projections of anthropogenic greenhouse gas emissions by sources and removals by sinks, as well as policies and measures in place to implement National Climate and Energy Plans. The two figures provide an overview of the information submitted by Italy in 2025, enabled by the national system, as laid out below.

Historical and projected greenhouse gas emission in Italy by sector in 2025.



Reported climate and energy Policies and Measures by affected sector in Italy.



## Institutional and procedural robustness

### *Institutional arrangements*

In 2016, in the context of the Kyoto Protocol commitments and its amendment ( Doha amendment ) for the second Commitment Period, Italy adopted the Law n. 79/2016, “Ratification of the Doha amendment to the Kyoto Protocol” which establishes the National system for policies, measures and emissions projections, in line with art. 12 of the EU Monitoring Mechanism Regulation ( MMR 525/2013/EU )

ISPRA is responsible for this system and, in cooperation with the Ministry of Ecological Transition, collects all the information and data from the competent Ministries.

### *Procedural and administrative arrangements and timescales*

The list of information and data that the Ministries have to provide to MATTM and ISPRA is set out in Annex 1 of the Law and in the Decree 9/12/2016.

As reported in article 2 of the Decree, information should be provided by the competent Ministries or entities by 15 september of each year.

Please see the attached file.

### *Procedures for the official consideration and approval of the Member States national system*

Ministry of environment is part of the National system and it is also supervising the dataflow pursuant to Decree 9/12/2016. Moreover projections and PaMS evaluation is part of a specific Annex to the “Documento di Economia e Finanza” ( DEF ), update annually by the Minister of Environment and adopted by the Government. The DEF outlines the objectives that the multiannual state budget intends to pursue and defines the scope within which to build the annual budget. The aim of the DEF is to enable Parliament to know in advance the Government's economic and financial policy lines; the latter is politically committed to drawing up the next annual budget in accordance with the criteria arising from the parliamentary debate. DEF is usually adopted each year in March or April.

<https://www.mef.gov.it/inevidenza/Approvato-il-DEF-2020-ripartire-dopo-lemergenza/>

[http://www.dt.mef.gov.it/modules/documenti\\_it/analisi\\_progammazione/documenti\\_programmatici/def\\_2020/DEF\\_2020\\_Allegato\\_MATTM.pdf](http://www.dt.mef.gov.it/modules/documenti_it/analisi_progammazione/documenti_programmatici/def_2020/DEF_2020_Allegato_MATTM.pdf)

### *Description of the information collection process*

As reported above the list of information and data ISPRA is set out in Annex 1 of the Law and in the Decree 9/12/2016.

According to Annex II Ministry of Economic Development, in relation to the sectors energy supply, energy consumption, energy supply, energy supply, transport and industrial processes shall provide:

- a. list of measures implemented accompanied by basic data adopted and planned in order to increase the efficiency of the energy efficiency and reduce greenhouse gas emissions; in particular the list includes all measures reporting to the European Union to the pursuant to art. 22 of Directive 2009/28/EU;
- b. where available, the costs of the measures implemented, taken and planned in order to increase energy efficiency and reduce greenhouse gas emissions;
- c. where available, ex-post assessments of the effects of each policy and measure;

d. energy scenario data.

Ministry of Infrastructure and Transport, in relation to the transport sector, shall provide:

- a. list of measures implemented, taken and planned for the reduction of energy consumption and gas emissions greenhouse;
- b. where available, the costs of the measures implemented, taken and planned for the reduction of energy consumption of greenhouse gas emissions;
- c. where available, ex-post assessments of the effects of each policy and measure;
- d. emissive and energy scenario data.

Ministry of Agricultural, Food and Forestry Policies in the fields of agriculture and activities Forest, shall provide:

- a. list of measures implemented, taken and planned at the in order to reduce greenhouse gas emissions;
- b. where available, the costs of the measures implemented, taken and planned to reduce greenhouse gas emissions;
- c. where available, ex-post assessments of the effects of each policy and measure;
- d. hypotheses for the development of the activities of the agricultural sector in emissive and energy matter.

Ministry of environment shall provide:

- a. list of measures implemented, taken and planned for waste management, circular economy, waste management improvement of air quality, to increase efficiency emissions from greenhouse gases, in order to reduce the use of greenhouse gas fluorinated compounds and for the purpose of regulating and monitoring changes land use also with regard to fires;
- b. where available, the costs of the measures implemented, taken and planned;
- c. where available, ex-post assessments of the effects of each policy and measure;
- d. emissive scenario data (including harmful gases) and energy

According to the Decree the ministries concerned, also by using their audited entities, shall communicate to ISPRA every two years, the above listed data. The detail and format of the data referred to in Annex II are defined by the Ministry of the Environment and Land Protection and and ISPRA, together with the ministries concerned.

The attached figure shows the data flow in the National system for emission inventories, emission projections and climate changes policies.

### ***Description of the process for selecting assumptions, methodologies and models for making projections of anthropogenic greenhouse gas emissions***

The attached figure shows in detail the data flow in the National system for emission projections and climate changes policies.

EU datasets and modeling exercises, as well as other international sources, provide information mainly on macroeconomic drivers, while information on technologies, costs and implementation of policies and measures are collected at national level. As shown in attached Figure, in order to collect all data and information needed for policies evaluation and emission scenario, ISPRA has established a wider network with other entities through temporary agreements and collaborations that can be activated if needed.

Hereby more information are provided about the other entities reported in figure 2:

- CRPA, Research Centre on Animal Production, supports ISPRA in the area of agricultural food production. Its activity is mainly focused on research, establishment and management of services aimed at promoting technical, economic and social progress in the livestock farming sector and spreading the most advanced forms of environmental friendly agriculture. In 1996 it became a joint stock-holding company with the public sector as its majority shareholder, <http://www.crpa.it/>

- ENEA is the Italian National Agency for New Technologies, Energy and Sustainable Economic Development; ENEA is also responsible for the monitoring of policies on energy efficiency, <https://www.enea.it/>
- CMCC is a foundation which has been established in 2005 with the financial support of the Italian Ministry of Education, University and Research, and the Ministry of the Environment, Land and Sea. Its mission is to investigate and model climate system and its interactions with society, <https://www.cmcc.it/>
- GSE is a State owned company working on energy efficiency and renewables; GSE is also responsible for the monitoring of policies on energy efficiency and renewables, [www.gse.it](http://www.gse.it)
- RSE carries out research into the field of electrical energy with special focus on national strategic projects funded through the Fund for Research into Electrical Systems. RSE is a total publicly-controlled Company owned by GSE, <http://www.rse-web.it/>
- POLIMI is the Polytechnic of Milan, which provides studies relating to the production, conversion, transport and use of energy.

### ***Institutional administrative and procedural arrangements for domestic implementation of EU's NDC***

Up to last year Ministry on environment, land and sea was responsible for the implementation of GHG emission targets, while sectorial Ministries were responsible for the adoption of the policies needed to pursue those targets.

The list of policies and measures, as well as their expected impact in terms of GHG emission reductions, GHG emission projections and targets are included in the abovementioned DEF adopted by the Government every year..

Recently the Ministry on environment, land and sea and some departments of and Ministry of economic development have been merged in a new Ministry of ecological transition in order to better coordinate policies on climate change and energy.

## **Formality**

### ***Legal arrangements***

The abovementioned Law n. 79/2016, "Ratification of the Doha amendment to the Kyoto Protocol" is the legal basis of the National system.

Please see the attached file.

## **Alignment with other reporting frameworks**

### ***GHG inventory reporting***

ISPRA is the entity responsible for both the GHG inventory, the projections and PaMs evaluation. Models used for projections and inventory share the same data set and approach. TIMES model used for the energy sector is calibrated on several historic years over the inventory in order to minimize the differences both in energy consumptions and in emissions. The projections used for the present submission are totally overlapping with the GHG inventory of years 2018 and of 2019, which is used as base year. For sectors not covered by the TIMES model, such as agriculture, projections are calculated applying statistical analyses to inventory

### ***Article 17 of the Governance Regulation (EU) 2018/1999 (NECPR)***

Ministries and public entities involved in the NECP elaboration and monitoring are the same involved in the National system for policies, measures and emissions projections. Information provided by the National system are the starting point for data analyses on which NECP and its updates are built.

## **Accountability and transparency**

### ***Quality control activities***

ISPRA is in responsible for the reporting of policies and measures and projections also under the UNFCCC. Expert peer reviews of policies and measures and projections occur biannually within the UNFCCC process, whose results and suggestions can provide valuable feedback on areas where the scenarios should be improved. The last in country review occurred in 2019. Moreover the exchange of information among the entities described in the next point assures that most relevant inputs and outputs are shared, reviewed and checked by many scientific and technical bodies that can provide reliable analyses and information.

GHG Projections are closely connected with emissions inventory which has its own QA/QC procedures as reported in the NIR.

## **Public participation**

### ***Stakeholder engagement***

Ministries in charge of policies in the sectors under their competence usually assure consultation with stakeholder and public. It should be noted that NECP has been submitted to public consultation and to Strategic Environmental Assessment according to Directive 2001/42/EC on the assessment of the effects of certain plans and programmes on the environment. This procedure assures a full engagement of stakeholders, public and local, regional and central authorities.

## **Contact information for entities with overall responsibility for National Systems**

ISPRA: National Institute for Environmental Protection and Research – Contact person Riccardo De Lauretis, [riccardo.delautetis@isprambiente.it](mailto:riccardo.delautetis@isprambiente.it)

Ministry for Ecological Transition, formerly named Ministry for the Environment, Land and Sea – Contact person Federica Fricano, [fricano.federica@minambiente.it](mailto:fricano.federica@minambiente.it)