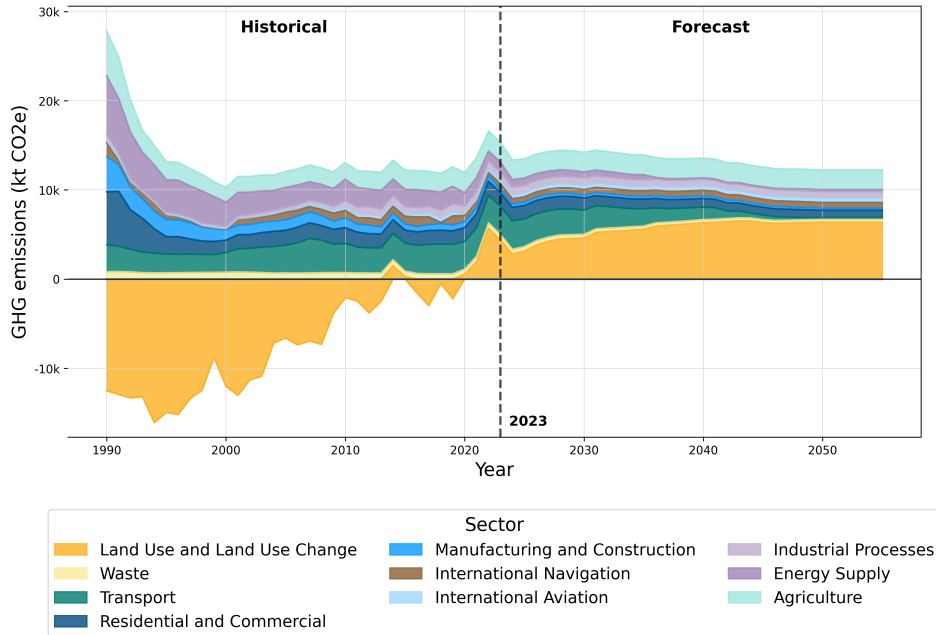


National system for policies and measures and greenhouse gas projections of Latvia

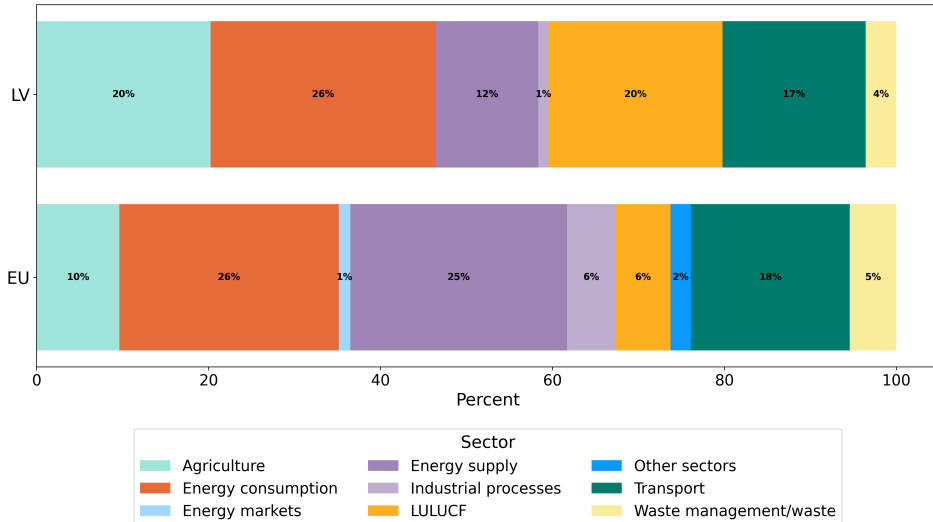
Information reported in 2025

A robust and complete national system ensures the delivery of good-quality information on the projections of anthropogenic greenhouse gas emissions by sources and removals by sinks, as well as policies and measures in place to implement National Climate and Energy Plans. The two figures provide an overview of the information submitted by Latvia in 2025, enabled by the national system, as laid out below.

Historical and projected greenhouse gas emission in Latvia by sector in 2025.



Reported climate and energy Policies and Measures by affected sector in Latvia.



Institutional and procedural robustness

Institutional arrangements

The Ministry of Climate and Energy is a lead authority for climate policy planning and coordination of PAMs and projections, including process of coordinating NECP, long-term strategy, PAMs development, ensuring consistency with EU climate goals, and overseeing reporting under Governance Regulation and UNFCCC.

Institutions involved in the preparation of the projections and PaMs are:

MoCE, Ministry of Economic (MoE), Latvian Environment, Geology and Meteorology Centre (LEGMC), Ministry of Agriculture (MoA), Latvian State Forest Research Institute "Silava", Institution of Physical Energetics, Latvia University of Life Science and Technologies.

The scheme of the institutional arrangements in place for the preparation of reports on PaMs and GHG projections as well as for reporting on them is shown in the Annex.

CoM No. 675 "The procedure for Development and management of the greenhouse gas inventory system, the projections system and the system for reporting on adaptation to climate change" (25 October 2022) determines the preparation of reports on PaMs and GHG projections including requirements of Paris Agreement consistent with Regulation (EU) 2018/1999.

University of Latvia in collaboration with MoE establishes and maintains an economic modeling system to determine the economic impact for achieving the identified economic and climate goals for the national system.

Procedural and administrative arrangements and timescales

MoCE is responsible for ensuring the timeline of the reporting.

Procedural, administrative arrangements and timeline in place for the preparation of reports on PaM and of GHG projections to ensure the timeliness, transparency, accuracy, consistency, comparability, and completeness of the information reported is set out in the Regulation No. 675 Chapter III "National System for the Preparation of Greenhouse Gas Projections" (see attached file). Activity data for the calculation of GHG projections are consistent with activity data for reporting under Directive 2016/2284 on the reduction of national emissions of certain atmospheric pollutants, amending Directive 2003/35/EC and repealing Directive 2001/81/EC.

Institutions that are involved in the process are described in the next description of reporting obligation. Short timeline shown below (every two years):

- Till 30.04 - MoE prepares and submits macroeconomic indicators to the MoCE.
- Till 02.05 - MoCE provides sectorial ministries with macroeconomic data.
- Till 01.06 - sectoral experts submit the primary data projections of indicators to MoCE.
- Till 01.09 - Institution of Physical Energetics submit the primary data projections of indicators to MoCE of energy and transport. Also, sectoral experts submit a description of GHG projections, PaMs to LEGMC.
- Approximately on 05.09 - MoCE organises meeting to discuss collected information and also any inaccuracy or problems that may have emerged.
- Till 01.10 - LEGMC submits draft report to MoCE.
- Approximately on 05.10. MoCE sends prepared information to sectorial ministries for consistency check for 20 days.
- In November LEGMC collects comments from sectorial ministries compiles and submits changes to MoCE, then MoCE starts QA/ QC procedure.
- 15.03 - MoCE submit the reporting on PaM and GHG projections to the European Commission (EC).

Procedures for the official consideration and approval of the Member States national system

National system is set out in Regulation No. 675 which has been approved by Cabinet of Ministers. Any changes to Regulation have to be aligned with sectoral ministries and approved by Cabinet of Ministers according to the Cabinet of Ministers Regulation No. 300 "Rules of Procedures of the Cabinet of Ministers" (<https://likumi.lv/ta/en/en/id/190612-rules-of-procedures-of-the-cabinet-of-ministers>).

Description of the information collection process

Latvia has established a coordinated system for the collection, verification, and reporting of information related to GHG projections and Policies and Measures (PAMs) to meet its obligations under the EU Governance Regulation and UNFCCC framework. Information collection process is determined in the Regulation No. 675 Chapter III "National System for the Preparation of Greenhouse Gas Projections". The system supports regular monitoring, reporting, and verification in line with national and EU-level requirements, including the Governance Regulation (EU) 2018/1999 and reporting obligations under the UNFCCC and Paris Agreement.

MoCE coordinates the co-operation of the authorities involved in the information collection process for GHG projections and PAMs.

MoE:

- by 30.04 prepares and hereinafter once in two years submits macroeconomic indicators to the MoCE;
- in cooperation with the Institute of Physical Energetics prepares the primary data of the energy and construction and, by 1 June every two years submits them to the MoCE.

LEGMC:

1) by 01.06 prepares and hereinafter once in two years:

- submits the primary data projections of indicators of the Waste management and Wastewater management sectors to the MoCE;
- prepares the secondary data and calculations of projections of GHG emissions;
- submits a description of GHG projections, PaMs for the activities of industrial processes and product use (IPPU), waste management and wastewater management to the MoCE;
- maintains and administers the part of GHG projections of the integrated database.

2) prepares a draft and final report on the PaMs and GHG projections (measures for the activities of Energy, Transport, Agriculture, IPPU, LULUCF and Waste sectors).

3) in cooperation with other involved institutions prepares a biennial report/biennial transparency report for UNFCCC.

MoA:

- in cooperation with the Latvia University of Life Sciences and Technologies and the Latvian State Forest Research Institute "Silava" prepares the primary data of the sector of Agriculture and Forestry and, by 1 June once in two years submits them to the MoCE.

Latvian State Forest Research Institute "Silava":

- in cooperation with the MoCE prepares the secondary data and calculations of projections of GHG emissions and removal of carbon dioxide for activities of the LULUCF.

Institution of Physical Energetics:

- in cooperation with the MoCE prepares the secondary data and calculations of projections of GHG emissions for the Energy and Transport sectors.

Latvia University of Life Science and Technologies:

- in cooperation with MoCE prepares the secondary data and calculations of projections for GHG emissions from agriculture activities.

The system for data collection and evaluation of PAMs is based on the following components:

a) Sector-specific data flow- Responsible ministries and agencies collect data through:

- Administrative sources (e.g., energy management information system, building information system, agricultural registries);
- Surveys (e.g., household energy consumption, modal split in transport);
- Statistical reporting (e.g., CSB energy and emissions statistics);
- Monitoring mechanisms linked to regulatory instruments (e.g., EU ETS).

b) GHG inventory and modelling

c) Integrated data platforms

- The Energy Management Information System (EMIS) monitors the fulfilling of energy efficiency targets by the tracking of energy savings in state owned buildings, large enterprises, large electricity consumers, and public administration.
- Sectoral information systems (e.g., the Agricultural Data Centre, National Building Energy Performance Register) contribute to data collection.

Quality Assurance and Transparency

Latvia applies a multi-level QA/QC framework for data collection and PAM evaluation, which includes:

- Cross-checking data between sources (e.g., inventory vs. energy statistics);
- Stakeholder consultations and expert review;
- Regular updates of emission factors and methodologies;
- Public access to reports and key data (e.g., via the LEGMC, Ministry of Climate and Energy website).

Description of the process for selecting assumptions, methodologies and models for making projections of anthropogenic greenhouse gas emissions

The report on PAM and GHG projections is based on the 2006 IPCC Guidelines and EC GHG Projection Guidelines (Part A and Part B).

Internationally widely applied partial equilibrium, bottom-up, dynamic, linear programming optimization model TIMES code for the energy-environmental system optimization which we have been adapting to Latvia's circumstances since 2022 by creating the TIMES-Latvia country model and applying it for the national level studies. TIMES model is used to model the complex development of the Latvian energy system and perform calculation of GHG projections. All previous GHG emissions projections for Energy were calculated by a MARKAL-Latvia model, which is also of the MARKAL/TIMES model platform.

GHG emissions projections in the Industrial processes are calculated using top-down accounting model. The model includes both the projection of activity data and GHG emission calculation. For calculation of the GHG emissions the historical emissions factors of the latest submitted inventory are applied, and these factors are constant for whole projected period. In its turn, the necessary activity data are projected based on the historical data and the macro-economic parameters characterizing the development of particular branch of industry sector (value added or industrial production index).

F-gas projections calculation is based on MS Excel top-down model. The structure and emission calculation are performed according to 2006 IPCC Guidelines and adjusted for projection estimation.

Econometric scenario-based model Latvian Agricultural Sector Analysis Model (LASAM) is used for the activity data generation of Latvian agriculture. LASAM provides an outlook for animal farming, producing projections in dairy, beef, sheep, goat, pig, poultry and horse farming and crop farming based on regression analysis principles. LASAM estimates a projection of the utilized agricultural (UUA) area and the structure of UUA, allow calculating the use of fertilizers in the agriculture sector. Secondary data projections including manure management system distribution, nitrogen excretion of livestock, use of organic fertilizer nitrogen and nitrogen content in crop residues are done by Latvia University of Life Sciences and Technologies experts based on results of pre-defined project "Development of the National System for Greenhouse Gas Inventory and Reporting on Policies, Measures and Projections" under 2009–2014 EEA Grants Programme National Climate Policy. Methodological approach used for manure management distribution projections are available in the scientific literature. Projections of managed organic soils are provided by Latvian State Forest Research Institute "Silava".

The main data source for land use and carbon stock changes is National forest inventory (NFI). Other data sources and research data are used as supplementary information, for quality assurance purposes, as well as to provide activity data for those sources which are not covered by the NFI programme.

The NFI and research data are used to estimate time series for area, gross increment, mortality and harvest.

Two separate IPCC waste model 2006 calculations were used. One for unmanaged sites (closed dumpsites) and other for managed (landfills since 2002). For unmanaged sites calculation method for bulk wastes was used, because there is no reliable information about disposed waste content available. According to Ltd Virsma research 2011 – DOC factor for these calculations was used as 0.17. Other factors are default from IPCC guidelines.

For managed sites method "waste by composition" in 2006 IPCC Waste Model was used. DOC and k values and other factors are taken from 2006 IPCC Guidelines. Waste composition is taken from Ltd Virsma research 2011. This waste composition is applied till year 2015.

Wastewater handling calculations are based on projected activity data emission projections were calculated according to IPCC 2006 Guidelines. Country-specific emission factors were used to calculate CH₄ emissions, but for emissions of N₂O default IPCC emission factors were used. No changes in emission factors were made for emission projections.

More information on methods and calculations can be found in Report on PAMs and GHG projections.

Institutional administrative and procedural arrangements for domestic implementation of EU's NDC

Requirements stemming out from the EU's NDC are described in the EU's legislation that is also implemented in Latvia.

With regards to GHG emissions that are not covered under the EU's emissions trading system (EU ETS) the current target and measures planned are described in the Updated Latvia's National Energy and Climate Plan 2021 – 2030.

With regards to the EU ETS requirements for installations from Latvia operating in the EU ETS are described in the Law on Pollution (in the future Climate Law) and the subsequent regulations by the Cabinet of Ministers.

Formality

Legal arrangements

Legislation CoM No. 675 “The procedure for Development and management of the greenhouse gas inventory system, the projections system and the system for reporting on adaptation to climate change” (25 October 2022) for the preparation of reports on PaMs and GHG projections including requirements of Paris Agreement consistent with Regulation (EU) 2018/1999 (Regulation No. 675) (<https://likumi.lv/ta/id/336733-siltumnicefekta-gazu-inventarizācijas-sistemas-prognozu-sistemas-un-sistemas-zinosanai-par-pielagosanos-klimata-parmainam>).

This legislative act determines the institutions that are responsible for GHG inventory and projections preparation, regulates institutional cooperation for establishment and management of the national GHG inventory and projections system, including data collection mechanism and the reporting procedure. The Regulation No. 675 also includes the procedures of Quality Assurance/Quality Control (QA/QC) for the GHG inventory and projections preparation. Additionally, the Regulation No.675 include the system for reporting on adaptation to climate change.

Latvia has established a structured framework to implement and monitor PAMs aimed at achieving its climate and energy targets, in alignment with EU and national legislation.

The Ministry of Climate and Energy is the primary authority responsible for coordination of sectoral ministries and involved institutions for climate related PAMs. Latvia submits biennial progress reports and annual GHG inventories to the EU and UNFCCC, tracking the effects of PAMs on emission trends. Based on these reports the annual progress report on moving to reach the targets is submitted to the Cabinet of Ministers for information and action. Progress is tracked using indicators defined in the NECP and related sectoral strategies. Latvia conducts ex-post and ex-ante assessments of PAMs, often using modelling tools to estimate emission reduction impacts.

Implementation and Monitoring is carried out by responsible sectoral ministries and sectoral institutions.

There is a mechanism according to the national legislation (Republic of Latvia Cabinet Regulation No. 675 Adopted 25 October 2022 Procedures for Establishing and Maintaining the System for Greenhouse Gas Inventories, the Projection System, and the System for Reporting on the Adaptation to Climate Change) for updating policies based on monitoring results, EU-level reviews, and stakeholder feedback.

Planning Instruments: Latvia’s climate actions are embedded in key strategic documents: NECP 2021–2030, National Long-Term Strategy for Climate Neutrality by 2050, Sustainable Development Strategy of Latvia 2030, The National Development Plan 2021–2027, Environmental Policy Strategy 2021-2027, Latvian National Plan for Adaptation to Climate Change until 2030. These documents outline specific PAMs across sectors such as energy, transport, agriculture, waste management, and LULUCF.

Alignment with other reporting frameworks

GHG inventory reporting

Basic principles and methods to estimate GHG emissions projections are the same as for GHG inventory.

GHG emissions and CO₂ removals projections are based on the 2006 Intergovernmental Panel on Climate Change (IPCC) guidelines.

Article 17 of the Governance Regulation (EU) 2018/1999 (NECPR)

On 12th of July 2024 CoM approved order No. 46 "On the Updated Latvian National Energy and Climate Plan for 2030". It confirmed that the MoCE can submit the Updated Latvian National Energy and Climate Plan for 2030 to the EC.

Legal and Strategic Links to the NECP Process - Latvia's NECP is anchored in national strategic planning and regulatory frameworks and sectoral development plans (e.g., Long-term Building Renovation Strategy, Transport Development Guidelines, Bioeconomy Strategy).

The NECP Progress Reports are an integral part of Latvia's national planning cycle:

- They build on the most recent GHG inventory and policy impact evaluations;
- They reflect updates from sectoral strategies and EU-level developments (e.g., Fit for 55, Repower EU);
- They inform policy adjustments and future NECP updates (e.g., for the 2040 target cycle).

Thus, the NECPR serves both as a monitoring tool and a policy feedback mechanism.

Technical and Procedural Arrangements- an internal workflow for NECPR preparation includes:

- Data collection and validation through established sectoral and statistical channels;
- Use of energy and emissions modelling tools, including bottom-up and top-down approaches;
- Indicator tracking, such as energy efficiency, renewables share, GHG trends, and sector-specific metrics;
- Quality assurance procedures, with data cross-checks and consistency analysis across policy areas;
- Stakeholder involvement, including input from municipalities, businesses, and civil society (e.g., public consultations, expert working groups).

Reporting and Communication - The Ministry of Climate and Energy is responsible for:

- Submitting the NECP Progress Reports biennially to the European Commission.
- Integrating NECPR findings into national climate communication, including parliamentary updates.

Latvia also ensures coherence between the NECPR and other international reports, such as GHG Inventory submissions and International Energy Agency's.

Accountability and transparency

Quality control activities

The Regulation No. 675 sets out institutions that are responsible for the preparation of GHG projections as well as includes the overall information on Quality Assurance/Quality Control procedures for the preparation of projections. It is described in Chapter IV "Procedures and Activities for Ensuring the Quality of Inventory and Greenhouse Gas Projections and for Quality Control Thereof" of Regulation No.675.

Latvia has developed QA/QC program. QA/QC programme determines specific tasks and timetable for the preparation of reports on PaMs and GHG projections. The quality control manager and compiler is the LEGMC (Quality Manager). Every second year till end of the May QA/QC plan has prepared to ensure the quality of reports for GHG projections and PaMs.

QA/QC program was updated in 2024 to have consistency with overall institutional and legislative changes.

Public participation

Stakeholder engagement

To prepare reporting obligation on PaMs and GHG projections sectorial ministries are involved. Before submitting the report to EC and UNFCCC report is coordinated with the sectorial ministries. Report is developed involving research institution and universities.

Contact information for entities with overall responsibility for National Systems

Ministry of Climate and Energy (MoCE) is the main coordination institution for the national system for the preparation of greenhouse gas (GHG) projections and policies and measures (PaMs).

Contacts:

Darta Valdemare

Senior Expert

Climate Policy Department

Tel. +371 63007314

darta.valdemare@kem.gov.lv

Agita Gancone

Climate Policy Department

Tel. +371 63007313

agita.gancone@kem.gov.lv