

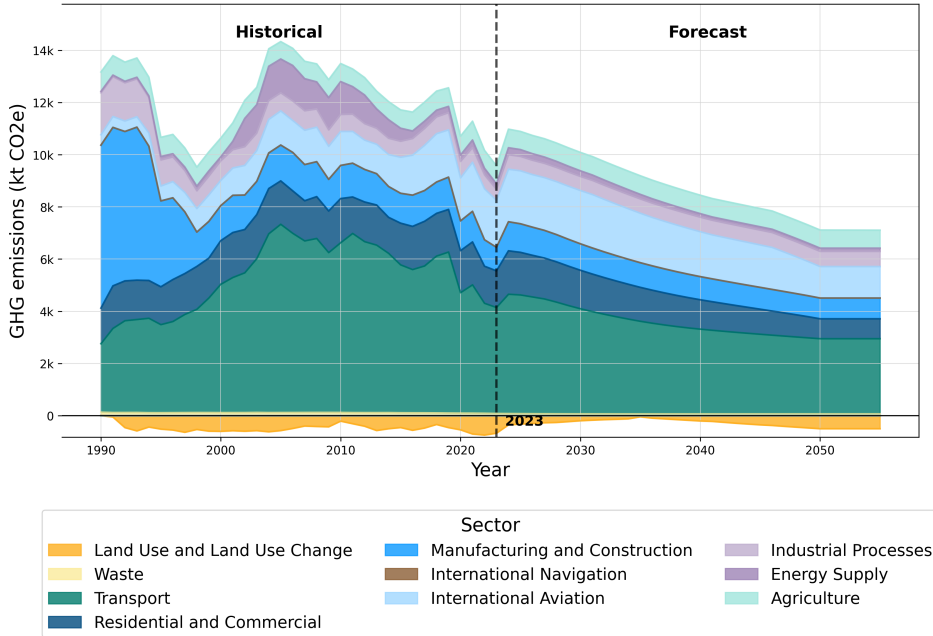


National system for policies and measures and greenhouse gas projections of Luxembourg

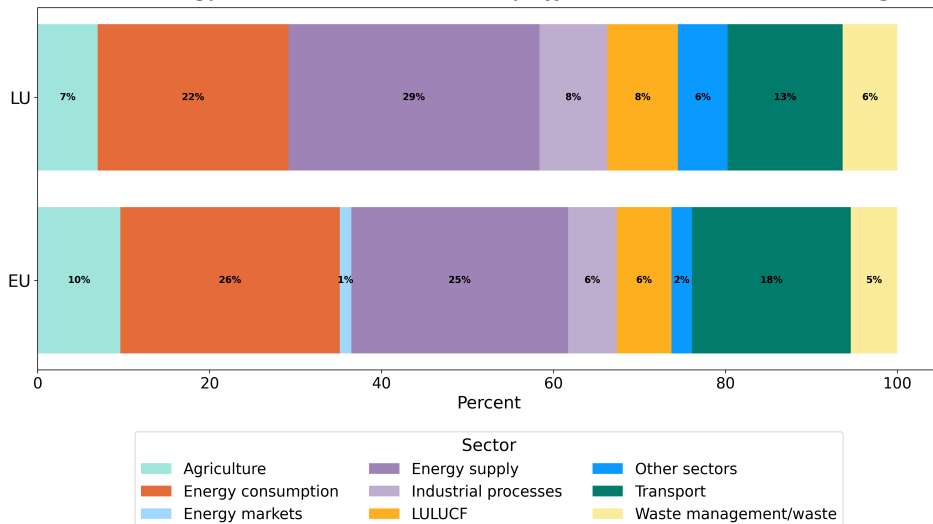
Information reported in 2025

A robust and complete national system ensures the delivery of good-quality information on the projections of anthropogenic greenhouse gas emissions by sources and removals by sinks, as well as policies and measures in place to implement National Climate and Energy Plans. The two figures provide an overview of the information submitted by Luxembourg in 2025, enabled by the national system, as laid out below.

Historical and projected greenhouse gas emission in Luxembourg by sector in 2025.



Reported climate and energy Policies and Measures by affected sector in Luxembourg.



Institutional and procedural robustness

Institutional arrangements

The national system's overall structure is defined by a Grand-Ducal Regulation (GDR 04.2017), issued on the 24th of April 2017. The purpose of this Regulation is to set up a national system for the monitoring, evaluation and reporting of GHG emissions, air pollutants, and the reporting of other information related to climate change and atmospheric pollution.

In general, the national system consists of:

- a) the "Single National Entity";
- b) the "National Focal Point" to the UNFCCC and the "National Focal Point" to CLRTAP;
- c) the "Projections Focal Point" and the "Inventory Focal Point";
- d) the sectoral experts and other competent institutions;
- e) the "Quality Assurance Managers".

Organisations involved in the preparation of the reports are:

- a) Ministry of Agriculture, Food and Viticulture and two of its administrations: Administration of Technical Agricultural Services (ASTA) and Rural Economy Department (SER);
- b) Ministry of the Economy – STATEC (National Institute of Statistics and Economic Studies of the Grand Duchy of Luxembourg) and Energy Directorate;
- c) Ministry of the Environment, Climate and Biodiversity and its three administrations: Environment Agency (AEV), Nature and Forest Agency (ANF) and Water Management Agency (AGE);
- d) Ministry of Finance and one of its administrations: Land Registry and Topography Administration;
- f) Ministry of Mobility and Public Works;
- g) Luxembourg Regulatory Institute (ILR).

The system is steered by the "Single National Entity", located in the MECB, which is responsible for overseeing the management, appointing the individual responsible persons and ensuring reporting. Accordingly, the ministry appoints staff for the defined roles of the "National Focal Points to the UNFCCC and the CLRTAP" and "the Projections and Inventory Focal Points".

Regarding the institutions and roles defined in Annex II of the GDR 04.2017, the "Single National Entity", in cooperation with the respective focal point (inventory or projections), further designates the sectoral experts and the individual "Quality Assurance Manager".

Concerning the preparation of reports on PaMs and on GHG projections, the "National Focal Point" to the UNFCCC and the "Projections Focal Point" are of significance.

The "National Focal Point" to the UNFCCC, located in the MECB, provides the link between the UNFCCC secretary and is responsible for submitting the inventory, projections, ex-ante and ex-post evaluation of PaMs, including related costs and impacts, as well as related methodological reports, to the Secretariat (and to the European Commission) on time. The National Focal Point to the UNFCCC is further, responsible for following the decisions related to the reporting obligations and quality audits and must communicate changes with its national colleagues.

The "Projections Focal Point", located in the MECB, acts as the projections and PaMs coordinator. He/she is responsible for ensuring timeliness, transparency, accuracy, consistency, comparability, completeness of projections and ex-ante and ex-post evaluation of PaMs, including related costs.

His/her tasks therefore include:

- informing sector experts, and other competent institutions of any changes in the requirements, methods and assumptions;
- assessing, the potential impact of these changes on the projections or the ex-ante and ex-post evaluation of PaMs, including the related costs in collaboration with the sector experts;
- assisting sectoral experts in their mission;
- managing the tasks and the submission of the various elements required for the calculation of the projections and the ex-ante and ex-post evaluation of the PaMs, including the associated costs;
- ensuring that all deadlines are respected;
- setting up a coherent system of documentation and archiving of the various information concerning the projections and the ex-ante and ex-post evaluation of PaMs, including the related costs, and ensuring the compilation of associated data;
- developing appropriate methods for collecting baseline data, validating the calculation of projections and the ex-ante and ex-post evaluation of PaMs, including associated costs, evaluating the analysis of sensitivity to projections and performing, in collaboration with the manager of quality assurance, control and quality assurance of the aforementioned elements;
- estimating projections and ex-ante and ex-post evaluation of PaMs, including related costs, for a given sector when the expert or institution does not transmit the data necessary to establish these calculations within the period set by the schedule mentioned above;
- analysing projections and carrying out ex-ante and ex-post analyses of PaMs, including related costs;
- compiling all the data and information required for the projections, the ex-ante and ex-post evaluation of PaMs, including the associated costs, and the corresponding methodological reports using national, European Commission and UNFCCC IT tools;
- managing the external audit as carried out under the auspices of the European Commission and the UNFCCC. Establishing a plan to improve the calculation of projections and the ex-ante and ex-post evaluation of PaMs, including the related costs, that includes the recommendations and encouragements given. Ensuring their proper execution, in close collaboration with the quality assurance manager;
- sharing all relevant information related to the implementation of projections and the ex-ante and ex-post evaluation of PaMs, including the associated costs and the options and tools to improve them, with the "Single National Entity";
- reporting to the "Single National Entity" of any issues that may affect the proper functioning of the national system, in particular, if the focal point has had to rely on the estimation of projections and ex-ante and ex-post assessments of PaMs, including the associated costs for a given sector, as a result of the expert or the institution referred to in Annex 2 of GDR 04.2017 failure to provide the data required for the preparation of these calculations within the given time frame.

The sector experts are responsible for:

- choosing appropriate methods for the calculation of projections as well as for the ex-ante and ex-post evaluation of PaMs, including the related costs;
- establishing, if necessary in consultation with the other competent institutions referred to in annex 2 to the GDR 04.2017, the activity data, parameters and emission factors necessary for the calculations of the projections as well as for the ex-ante evaluation and ex-post of PaMs, including associated costs;
- calculating the projections as well as carry out the ex-ante and ex-post evaluation of PaMs, including the related costs, within the framework defined respectively by the UNFCCC, CLRTAP and the European Union;
- estimating the projections for the categories that fall within their sector(s), when the institution

referred to in annex 2 to the GDR 04.2017 does not provide them with the data necessary for the calculation of these projections;

- calculating past projections and reassessing the costs and effects of PaMs when necessary, in particular for the following reasons: refinements or changes in methods, considering new sources of information, bug fixes, among others;
- estimating and calculating uncertainties relating to projections as well as to the ex-ante and ex-post evaluation of PaMs, including the related costs, in particular through sensitivity analyses;
- ensuring the quality assurance of projections and ex-ante and ex-post evaluation of PaMs, including related costs, as well as the control of this quality;
- preparing the necessary information for drafting methodological reports relating to their sector(s) for projections and the ex-ante and ex-post evaluation of PaMs, including the related costs;
- actively participating in audits, preparing answers to auditors' questions and transmitting them to the "projections focal point" within the deadlines established by the latter;
- informing the "projections focal point" and the quality assurance manager of any problem encountered during the execution of their mission(s).

A detailed list of the ministries, administrations and other competent institutions is given in Annex II of the GDR. A copy of this list, as well as a graph of this organogram, are attached.

Procedural and administrative arrangements and timescales

The reporting procedures are listed in the GDR 04.2017, with tasks listed at several levels of competence an assures consistency with preparation of reports on PaMs, and of GHG projections under the Governance Regulation.

The sectoral experts and other relevant institutions listed in Annex II (see uploaded document LU_National Systems_PaMs and Projections_GDR 04.2017_Annexes I and II) are responsible for compiling the baseline data for the projections and data modelling, assessing the costs and impacts of PaMs, and providing the underlying assumptions and calculations for these trends and assessments. The sectoral experts and other relevant institutions shall then provide this information to the "Projections Focal Point", which shall be responsible for ensuring the overall timeliness, transparency, accuracy, consistency, comparability and completeness of the projections and the ex-ante and ex-post evaluation of PaMs, including the associated costs.

In doing so, the "Projections Focal Point" ensures that the sectoral experts have all the necessary information to carry out their task and informs of any changes in the requirements and a timetable for the transmission of the different elements. He/she is also responsible for setting up a coherent system for documenting and archiving the various information and for developing appropriate methods for collecting primary data, validating the calculation of projections and ex-ante and ex-post evaluation of PaMs, including the costs involved. He/she is then also responsible for analysing the data and projections provided, estimating projections and, in case of missing data, carrying out the ex-ante and ex-post evaluation of PaMs, including the related costs. Furthermore, he/she is responsible for the actual analysis and reporting. Besides, it is his/her responsibility to accompany possible external audits. Finally, he/she is subject to the "Single National Entity" (MECB) and therefore obliged to report any shortcomings in the process and provide information on the implementation of the projections and the ex-ante and ex-post evaluation of the PaMs, including the related costs. Furthermore, he/she is empowered to provide means for their improvement.

With regard to the timescales for preparing reports on policies and measures (PaMs) and projections, it is important to distinguish between the two.

For PaMs, deadlines are based on reporting obligations at the European or UNFCCC level. More recently, these have included submitting PaMs by 15 March in odd-numbered years, and submitting the draft update of the NECP (2023) and the updated NECP (2024). In future, reporting on PaMs will take place on a half-yearly basis within the framework of the Interministerial Committee for Climate Action. This Committee presents and discusses all of the government's climate action policies and strategies, and all of the relevant ministries are represented. The MECB is responsible for coordinating climate policy and therefore chairs the Interministerial Committee.

As with the PaMs, there were no specific deadlines for the GHG projections other than international reporting constraints. However, the Technical Group on Projections, which comprises the relevant ministries and STATEC (our statistics and economic studies office, which carries out most of the projections), will be discussing a course of action for the future based on the experience gained during the preparation of the 2024 NECP update. A PaM of this NECP will actually help us with this task: PaM 123 – Development of statistics, models and monitoring indicators.

In terms of completeness, this is mostly done using the integrated QA/QC tools in the reporting files (e.g. the Excel file for the projections) or by the agents themselves, who are responsible for reporting. As a small administration performing these tasks, we do not have the resources for thorough QA/QC checks based on the TTACCC principles.

Procedures for the official consideration and approval of the Member States national system

The national system is enshrined in the GDR 04.2017, which is a regulation and, as such, must be adhered to by all relevant administrations and stakeholders. Consequently, there is no need to approve the national system.

Changes to the national system will therefore require to amend this GDR using the regular legal procedures in place. This would of course occur with the consultation and involvement of all stakeholders.

Description of the information collection process

The sectoral experts and other relevant institutions listed in Annex II (see uploaded document LU_National Systems_PaMs and Projections_GDR 04.2017_Annexes I and II) are responsible for compiling the baseline data for the projections and data modelling, assessing the costs and impacts of PaMs, and providing the underlying assumptions and calculations for these trends and assessments.

Description of the process for selecting assumptions, methodologies and models for making projections of anthropogenic greenhouse gas emissions

Sectoral experts, sometimes with the help of STATEC, are in charge of selection of assumptions, methodologies and models used. For the moment, Luxembourg uses different approaches to calculate GHG projections and has not yet put in place a thorough system to evaluate PaMs, whether ex-ante or ex-post, including their related costs.

Institutional administrative and procedural arrangements for domestic implementation of EU's NDC

These arrangements have been discussed in the framework of the effective implementation of the national "Climate Law" and its provisions and proposals - see Luxembourg's first BTR, pp. 45-48.

Reporting on PaMs will take place on a half-yearly basis within the framework of the

Interministerial Committee for Climate Action. This will also cover a 'tracking system' regarding PaMs implementation, and hopefully through the Technical Group on Projections, the ex-ante evaluation of the expected impacts of PaMs will be possible (followed later by ex-post and cost evaluations).

Formality

Legal arrangements

Grand-Ducal Regulation of the 24th of April 2017 on the establishment of a national system for monitoring, assessing and reporting greenhouse gas emissions and air pollutants and reporting of other information related to climate change and air pollution (GDR 04.2017).

Original Title:

Règlement grand-ducal du 24 avril 2017 relatif à la mise en place d'un système national pour la surveillance, l'évaluation et la déclaration des émissions de gaz à effet de serre et des polluants atmosphériques et la déclaration d'autres informations ayant trait au changement climatique et à la pollution atmosphérique.

Alignment with other reporting frameworks

GHG inventory reporting

Data alignment with the national inventory system is ensured by the GDR 04.2017 and the defined distribution of tasks including the coordination function by the "Projections Focal Point" and "Inventory Focal Point" under the responsibility of the "Single National Entity" (MECB): see uploaded document LU_National Systems_PaMs and Projections_GDR 04.2017_Annexes I and II.

Article 17 of the Governance Regulation (EU) 2018/1999 (NECPR)

With the entry into force of the Governance Regulation, GHG inventories and projections, as well as the ex-ante and ex-post evaluation of PaMs, including the related costs, are progressively embedded in a "NECP Governance" process to ensure consistency and develop an integrated progress reporting. The national "Climate Law" and its provisions and proposals - see Luxembourg's first BTR, pp. 45-48 - also helps achieving integrated and consistent assessments of progress made.

As small administrations are involved, there are no differences between the NECP and the NECPR, i.e. the same agents work on both. As it is the case for the NECP through the Interministerial Committee for Climate Action, all the administrations concerned by the NECPR are working closely with the MECB to provide data and information for the reports.

LU BTR1 is available here: <https://unfccc.int/documents/648820>

Accountability and transparency

Quality control activities

Quality assurance and quality control activities for reporting of PaMs and GHG projections to help ensure accuracy and completeness are mostly made using the quality control/validation checks provided by the EEA and the ETCs in ReportNet 3.0. As indicated above, the "Projections Focal Point" in its tasks must ensure accuracy and validate the ex-ante and ex-post evaluation of PaMs, including related costs, evaluate the analysis of sensitivity to projections and perform, in collaboration with the "Quality Assurance Manager", control and quality assurance of the



aforementioned elements.

Public participation

Stakeholder engagement

This is part of the procedures that Luxembourg would like to implement in the coming years.

Contact information for entities with overall responsibility for National Systems

As the "Single National Entity", the Ministry of Environment, Climate and Biodiversity (MECB) has the overall responsibility for the National System for policies and measures (PaMs) and projections.

The MECB is therefore, responsible for the management of the national system. This includes the appointment of the officers responsible for data collection, analysis, and projection, the appointment of the officers responsible for the official submission to the respective international authorities as well as the continuous improvement of the system.

Contact Details:

Address

4, Place de l'Europe
L-1499 Luxembourg

Generic e-mail

info@mev.etat.lu

Phone

+352 24 78 68 24

A detailed list of other bodies (and their specific role) involved in reporting on the "National System for Policies and Measures and Projections" is attached below.