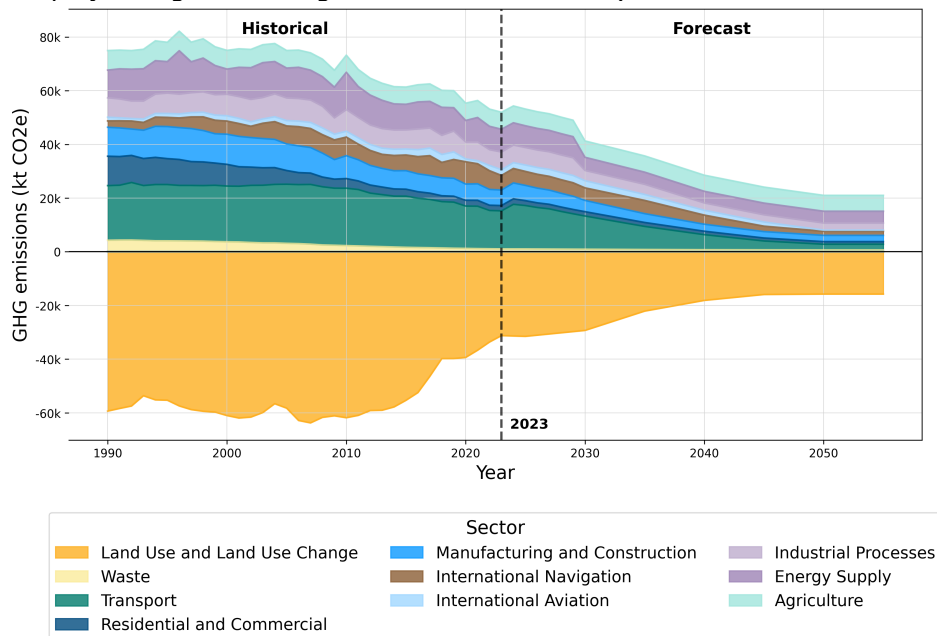


# National system for policies and measures and greenhouse gas projections of Sweden

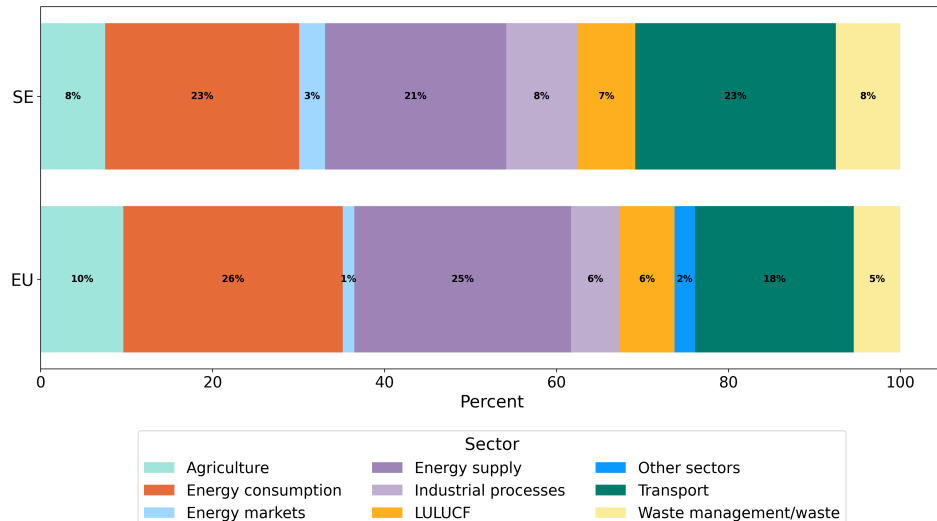
## Information reported in 2025

A robust and complete national system ensures the delivery of good-quality information on the projections of anthropogenic greenhouse gas emissions by sources and removals by sinks, as well as policies and measures in place to implement National Climate and Energy Plans. The two figures provide an overview of the information submitted by Sweden in 2025, enabled by the national system, as laid out below.

Historical and projected greenhouse gas emission in Sweden by sector in 2025.



Reported climate and energy Policies and Measures by affected sector in Sweden.



## Sweden

### Institutional and procedural robustness

#### *Institutional arrangements*

Institutional arrangements for projections

The Swedish Environmental Protection Agency has the responsibility for the reporting of projections of greenhouse gases, which includes compiling the underlying data, preparing the report and reporting files and for quality assurance. Several governmental agencies are involved in the process as well as a consortium of consultants, SMED.

Institutional arrangements for reporting on policies and measures

The Swedish Environmental Protection Agency has the responsibility for the reporting of policies and measures, which includes producing the report and to report. As the governmental agencies have a sectorial responsibility for the implementation and assessment of policies and measures and a thorough know-how of policies and measures, these agencies are also involved in the process of quality assurance.

See also chapter 5.2 in the Report for Sweden on climate policies and measures and on projections, attached.

#### *Procedural and administrative arrangements and timescales*

Procedural arrangements for projections

The national system is designed to ensure the quality of the reporting on policies and measures and projections, i.e. to ensure its transparency, consistency, comparability, completeness, accuracy and timeliness. The process for reporting applies a plan-do-check-act approach.

Underlying projections on activity data are provided by several government agencies. The projections on emissions are then produced and compiled by the Swedish Environmental Protection Agency.

Projections of emissions and removals of greenhouse gas emissions shall be reported the 15th of March 2021 and every two years after that, according to article 18 in the Regulation (EU) 2018/1999

Procedural arrangements for policies and measures

The national system is designed to ensure the quality of the reporting on policies and measures and projections, i.e. to ensure its transparency, consistency, comparability, completeness, accuracy and timeliness. The process for reporting applies a plan-do-check-act approach.

See also chapter 5.4 in the Report for Sweden on climate policies and measures and on projections, attached.

#### *Procedures for the official consideration and approval of the Member States national system*

The Swedish Ministry of Climate and Enterprise is the national entity with the overall responsibility the national system for reporting on policies and measures and for the projections of anthropogenic greenhouse gas emissions.

## Sweden

The Swedish Environmental Protection Agency has the responsibility for the reporting of the national system for reporting on policies and measures and projections.

The Swedish Environmental Protection Agency sends the report to the Swedish Ministry of Climate and Enterprise for official consideration and approval of the Government Offices of Sweden before submitting the report to the EU.

### ***Description of the information collection process***

#### Developing projections

During the process of producing the projections the underlying data are received from the Swedish Energy Agency, the Swedish Transport Agency, the Transport Analysis, the Swedish Transport Administration, the Swedish Board of Agriculture and the Swedish University of Agricultural Sciences and compiled by Swedish Environmental Protection Agency. As the governmental agencies have a sectorial responsibility for the implementation and assessment of policies and measures and a thorough know-how of policies and measures, this ensures that all implemented policies and measures are taken into consideration when producing the projections.

#### Evaluating policies and measures

The Swedish Environmental Protection Agency collects information of policies and measures mainly through scanning Government's bills. Moreover, information on the policies and measures are collected on the implementing government agencies' websites. As a complement, government agencies identify, in the quality check, if any decision of relevance is missing and provides, if requested, additional information. Information for evaluation of policies and measures is mainly collected from relevant Government agencies and, if relevant, from actors.

### ***Description of the process for selecting assumptions, methodologies and models for making projections of anthropogenic greenhouse gas emissions***

The relevant assumptions, methodologies and models for producing the report on projections, are selected when planning the report. The work is based on established methods and models that have been used for many years and assessed to be the most relevant and suitable. The methodologies and models are continuously developed and improved. Assumptions are made based on available data and on expert knowledge. The work is carried out in close co-operation between the Swedish Environmental Protection Agency and other relevant agencies. For projections, sensitivity analyses are performed by applying a range of lower and higher estimates to the key assumptions. These are chosen to reflect the sensitivity of the model when changing some key parameters over a range of values.

### ***Institutional administrative and procedural arrangements for domestic implementation of EU's NDC***

Sweden has set up a national climate policy framework consisting of a Climate Act, national climate targets and a Climate policy council. The climate act will impose responsibility on the current Government, and on future governments, to pursue a climate policy that is based on the national climate targets and to provide clear feedback on the progress. The national climate targets are in line with, or more ambitious, than the EU's nationally determined contribution, wherefore the institutional set up should be sufficient.

## Formality

## Sweden

### ***Legal arrangements***

The legal basis for Sweden's national system for reporting on policies and measures and projections is provided by the Ordinance on Climate Reporting (SFS 2014:1434) which describes the roles and responsibilities of the government agencies in the context of climate reporting. The ordinance requires that sufficient resources are available for timely reporting. The ordinance supports all reporting requirements according to the Governance Regulation.

In addition, formal agreements including the details on content and timetable for providing data have been made between the Swedish Environmental Protection Agency and the relevant government agencies.

## **Alignment with other reporting frameworks**

### ***GHG inventory reporting***

The national system for reporting on policies and measures and projections is based on the national system for the national inventories. The legal arrangements are the same for reporting on policies and measures and projections as for the national inventory. The ordinance supports all reporting requirements according to the Governance Regulation. The institutional and procedural arrangements for reporting on policies and measures and projections are based on the national system for inventories but agencies involved and procedural arrangements and timescales are adjusted to be relevant for reporting on policies and measures and projections.

### ***Article 17 of the Governance Regulation (EU) 2018/1999 (NECPR)***

The information in the report on policies and measures and projections are used in the integrated national energy and climate reports.

## **Accountability and transparency**

### ***Quality control activities***

Quality control and quality assurance for reporting on projections

All data are subjected to general quality control activities throughout the production of data. The quality control and quality assurance cover transparency, completeness, consistency, accuracy and comparability. The quality checks also identify potential areas for improvement in future reporting. The findings are discussed in a final meeting which concludes the reporting cycle and serves as input into the planning of the next.

The quality control and quality assurance activities are performed in two steps. The quality control is performed by the agencies and actors themselves, which provide underlying data to the scenarios. Then, when the report and reporting files are prepared, the quality assurance activities are performed by the Swedish Environmental Protection Agency, Transport Analysis, the Swedish Board of Agriculture and the Swedish Forest Agency.

The quality control and quality assurance activities are documented. The Swedish Environmental Agency provides a checklist that can be used during the quality procedures and for documentation.

Quality control and quality assurance for reporting on policies and measures

All information is subjected to general quality control activities throughout the production of the report. Quality assurance is carried by relevant government agencies, as provided in the Ordinance.

## Sweden

The timetables for quality assurance are included in the agreements between the government agencies and the Swedish Environmental Protection Agency. The quality assurance covers transparency, completeness, consistency, accuracy and comparability. The quality control and quality assurance activities identify potential areas for improvement in future reporting. The findings serve as input to the planning of the next reporting cycle.

## Public participation

### *Stakeholder engagement*

In the preparation of reporting on policies and measures several government agencies are involved, as described in section 5.2. In the process of production of projections each government agency contacts relevant actors based on relevance and need for information. Also for evaluation of policies and measures relevant actors are contacted based on need for information.

## Contact information for entities with overall responsibility for National Systems

The Swedish Ministry of Climate and Enterprise is the national entity with the overall responsibility for the national system for reporting on policies and measures and for the projections of anthropogenic greenhouse gas emissions.